

Homogeneous
Compact Vinyl

**NC
Garden City**



NC Dünya Flor

Homogeneous
Compact Vinyl

NC Garden City



NC Dünya Flor



Compact:  NC 200



Compact:  NC 201



Compact:  NC 202



Compact:  NC 203



Compact:  NC 204



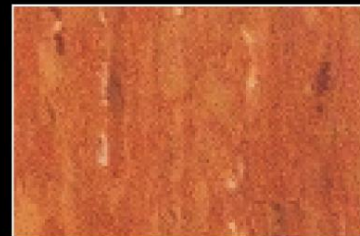
Compact:  NC 205



Compact:  NC 206



Compact:  NC 207



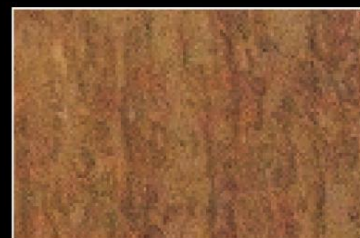
Compact:  NC 208



Compact:  NC 209



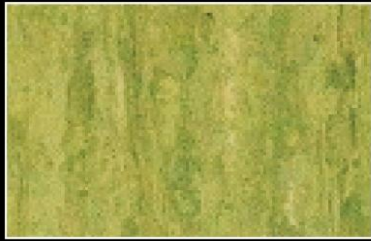
Compact:  NC 210



Compact:  NC 211



Compact: NC 212



Compact: NC 213



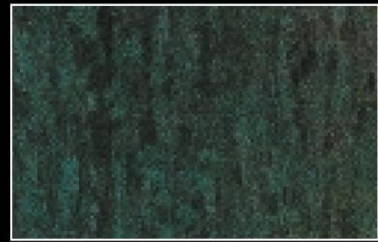
Compact: NC 214



Compact/Acoustic: NC 215



Compact: NC 216



Compact: NC 217



Compact/Acoustic: NC 218



Compact/Acoustic: NC 219



Compact: NC 220



Compact: NC 221



Compact: NC 223



Compact: NC 222





Compact:  NC 226




Compact:  NC 227



Compact:  NC 228



Compact/Acoustic:  NC 229




Compact:  NC 230




Compact:  NC 231



Compact/Acoustic:  NC 232



Compact/Acoustic:  NC 233




Compact:  NC 234



Compact:  NC 235



Compact/Acoustic:  NC 236




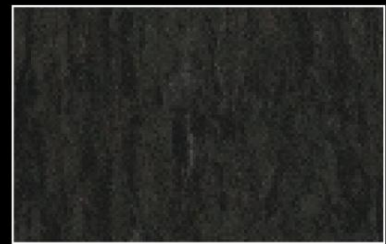
Compact:  NC 237



Compact:  NC 238



Compact/Acoustic:  NC 239



Compact:  NC 240



Homogeneous
Compact Vinyl

NC
Garden City

NC Dünya Flor
Yeni Mahalle, Dünya Sokak Kemal Bey Apt No:4/1 Pendik, İstanbul/Turkey
T: +90 216 354 00 91 F: +90 216 354 89 27
dunyaflor.com

Homogeneous
Compact Vinyl

NC Garden City

Specification

The coordinated NC Garden City range includes NC Garden City, NC Garden City acoustic and NC Garden City Multisafe. NC Garden City is a 2 mm compact flooring in 41 colours and a choice of 2 m width rolls, 61 x 61 cm tiles for all colours plus 71.16 x 10.16 cm planks for Essence designs. The Essence design is available with and without embossing. NC Garden City acoustic and NC Garden City Multisafe come in 1.95 m and 2 m width rolls in 12 colours from the range, with others available on request. Suitable for most commercial areas, the NC Garden City family offers a wide range of colourways and possible combinations to provide a solution for every area with outstanding performances and life cycle costs.

CERTIFICATION&CLASSIFICATION	STANDARDS	NC GARDEN CITY COMPACT	NC GARDEN CITY ISLAK ZEMİN	NC GARDEN CITY ACOUSTIC
Type of floorcovering	EN 649	Homogeneous vinyl flooring	Homogeneous single layered vinyl flooring with studded surface	-
	EN 651	-	-	Homogeneous single layered vinyl flooring with a PU foam interlayer
CE Certification		Yes	Yes	Yes
Classification	EN 685	Commercial: 34 Industrial: 43	Commercial: 31	Commercial: 34 Industrial: 42

CERTIFICATION&CLASSIFICATION	STANDARDS	NC GARDEN CITY COMPACT	NC GARDEN CITY ISLAK ZEMİN	NC GARDEN CITY ACOUSTIC
Wear layer thickness	EN 429	2.0 mm	2.0 mm	2.0 mm
NC Garden City PUR		Yes	No	Yes
Foam layer thickness	EN 429	-	-	15 mm
Adhesive foil thickness	EN 429	-	-	0.2 mm
Total thickness	EN 428	2.0 mm	2.25 mm	3.7 mm
Total weight	EN 430	2 800 g/m ²	2 820 g/m ²	3 500 g/m ²
Form of delivery	EN 426 Sheet (rolls)	NC Garden city Approx. 25 r m x 200 cm art. no. 3242 --- 3 digit colour number	Approx. 25 r m x 200 cm art. no. 3240 --- 3 digit colour number	Approx. 25 r m x 195 cm art. no. 3076 --- 3 digit colour number
	EN 427 Tiles (box)	NC Garden city 61 x 61 cm - 14 tiles/box = 5.21 m ² art. no. 3217 --- 3 digit colour number	-	-
	Sheet (rolls)	NC Garden city Essence Approx. 25 r m x 200 cm art. no. 3077 --- 3 digit colour number	-	-
	Sheet (rolls)	All over embossing Approx. 25 r m x 200 cm art. no. 3078 --- 3 digit colour number	-	-
	Sheet (rolls)	Planks embossing Approx. 25 r m x 200 cm art. no. 3079 --- 3 digit colour number	-	-
	Tiles (box)	NC Garden city Essence 61 x 61 cm - 14 tiles/box = 5.21 m ² art. no. 3080 --- 3 digit colour number	-	-
	Planks (box)	Decorplanks with embossing 71.16 x 10.16 cm - 28 planks/box = 2.02 m ² art. no. 3082 --- 3 digit colour number	-	-

CERTIFICATION&CLASSIFICATION	STANDARDS	NC GARDEN CITY COMPACT	NC GARDEN CITY ISLAK ZEMİN	NC GARDEN CITY ACOUSTIC
Dimensional stability	EN 434	≤ 0.40 % for rolls ≤ 0.25 % for tiles	≤ 0.40 %	≤ 0.40 %
Abrasion Group	Thickness loss	-	Group P: ≤ 0.15 m	-
	Volume loss	EN 660: Part 1 EN 660: Part 2	Group T: ≤ 2.0 m ³	Group P: ≤ 4.0 m ³
Residual indentation	EN 433	Approx. 0.03 mm	Approx. 0.03 mm	≤ 0.20 mm
Castors chair test	EN 425	Suitable	-	Suitable
Static electrical charge	EN 1815	< 2 kV	< 2 kV	-
Underfloor heating		Suitable - max. 27° C	Suitable - max. 27° C	Suitable - max. 27° C
Impact sound resistance	EN ISO 717/2	-	-	Approx. + 16 dB
Thermal resistance	EN 12667/DIN 52612	Approx. 0.01 m ² K/W	Approx. 0.01 m ² K/W	-
Reaction to fire	EN 13501-1	Class B _{f1} s1	Class B _{f1} s1	Class B _{f1} s1
	EN ISO 9239-1	≥ 8 kW/m ²	≥ 8 kW/m ²	≥ 8 kW/m ²
	EN ISO 1925-2	Pass	Pass	Pass
Light fastness	EN ISO 105-B02	≥ level 6	≥ level 6	≥ level 6
Chemical resistance	EN 423	Good resistance	Good resistance	Good resistance
Bacteria resistance	DIN EN 846-C	Does not favour growth	Does not favour growth	Does not favour growth
Clean room test	ASTM F55/00	Class A	-	-
Bare foot test	DIN 51097	-	Class B (18°)	-
Slip resistance	DIN 51130 EN 13893	R9 ≥ 0.3	R10 ≥ 0.3	R9 ≥ 0.3
Colours		NC Garden City 51 NC Garden City Essence 13	12	12

The above information is subject to modification for the benefit of further improvement. (07/11)
NC Dünya Flor instructions regarding installation, cleaning and maintenance should be observed. Please contact NC Dünya Flor at the adres shown for these instructions.

NC GARDEN CITY COMPACT	NC GARDEN CITY ISLAK ZEMİN	NC GARDEN CITY ACOUSTIC
5.4 % Neutral	5.4 % Neutral	4.4 % Neutral
100 % 23.5 g/m ² Recyclable	100 % 23.5 g/m ² Recyclable	100 % 21.9 g/m ² Recyclable
Optimal Indoor Air Quality	Optimal Indoor Air Quality	Optimal Indoor Air Quality
PHT +18 g/m ² +18 g/m ² +18 g/m ²	PHT +18 g/m ² +18 g/m ² +18 g/m ²	PHT +18 g/m ² +18 g/m ² +18 g/m ²
<small>*TVOC: AT 24 DATA</small>	<small>*TVOC: AT 24 DATA</small>	<small>*TVOC: AT 24 DATA</small>

